

# metricon



\*Artists impression, colours and landscaping specification will vary. Please contact us for site specific detail.

## Lot 2120 Vineyard Circuit

# \$699,000

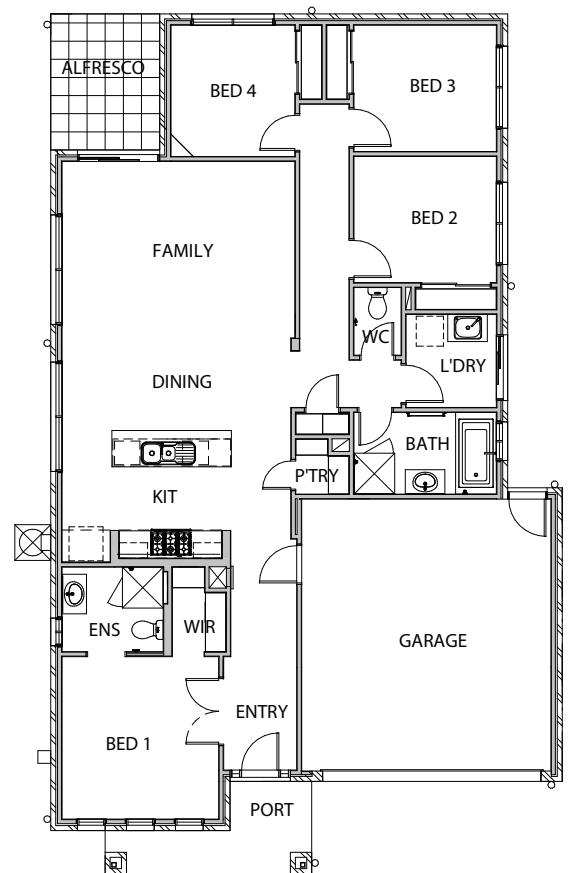
**This 4 bedroom Amira 20 Kingston by Metricon is well into construction and will be finished with nothing more for you to do except move in!**

Complete with blinds, fencing and landscaping including basic irrigation.

Situated on an approx. 680m<sup>2</sup> allotment, the home will feature 4 bedrooms including a Front Master Bedroom complete with Ensuite and walk in robes.

A wide entry and hallways connect through the remaining bedrooms and living spaces including an open plan Kitchen, Meals, Family area that flows out to an under roofline Alfresco.

The kitchen with its 900mm appliances, ample storage and stone is sure to be an entertainers delight.



For more info call Briony Russell on 0429 130 922  
or email [briony@glanmirepark.com.au](mailto:briony@glanmirepark.com.au) | [GlanmirePark.com.au](http://GlanmirePark.com.au)

  
**GLANMIRE PARK**  
YARRAWONGA